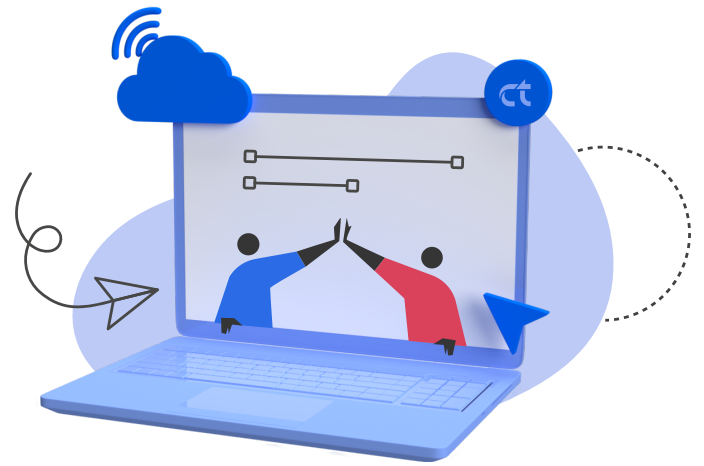


# Protecting your Microsoft 365 data in the event of a DDoS attack



On June 9, 2023, users worldwide experienced widespread disruption as Microsoft OneDrive went down due to a series of DDoS (Distributed Denial of Service) attacks.

This type of attack is a **cybercrime** involves the attacker flooding a server with internet traffic to prevent users from accessing connected online services and sites. This incident highlights the vulnerability of cloud storage services and serves as a reminder of the importance of implementing a reliable backup solution.

## The Impact of OneDrive outages

During the period of downtime, users encountered difficulties accessing their files and experienced synchronisation issues across various devices. For those heavily reliant on OneDrive for storing important documents and files, this disruption was more than an inconvenience—it posed a potential risk to their workflow and productivity.

## The Microsoft Shared Responsibility Model

Microsoft 365 has limited backup and retention policies that can only fend off situational data loss and is not intended to be an all-encompassing backup solution. With our tailored retention you can rest assured that even if a user's account gets deactivated/deleted that can bring the data back.

## Introducing CT Secure Cloud Backup for Microsoft 365

CT Secure Cloud Backup for Microsoft 365, powered by Veeam, is an enterprise-grade backup solution designed specifically to protect your valuable data within the Microsoft 365 environment. By using this comprehensive solution, you can mitigate the risks associated with potential outages, security breaches, or accidental data loss.

## Key Features



### Off-site backup

Your data is securely backed up to an off-site location, reducing the risk of data loss due to local environment issues.



### Flexible Recovery

Flexible recovery options are available, including granular recovery of individual items, folders, or entire mailboxes, as well as daily recovery options.



### Encryption

Your data is encrypted both at rest and in transit, ensuring that only authorised individuals can access it.



### Fully managed service

We provide the licensing, storage and support as one fully managed service.



### Versioning

Multiple versions of files are stored, enabling you to restore data to a specific point in time if necessary.



### Reporting

Detailed reports provide insights into your backup activities, ensuring that your data is adequately protected and allowing you to address any issues proactively.

# Microsoft 365 Backup compared to CT Secure Cloud Backup for Office 365

The recent OneDrive outages serve as a stark reminder of the vulnerabilities inherent in relying solely on cloud storage services for data management

Microsoft's Shared Responsibility Model emphasises the need for users to take proactive steps in securing their data.

Implementing a reliable backup solution, such as CT Secure Cloud Backup for Microsoft 365, provides peace of mind and ensures the continuity of your business operations even in the face of unexpected disruptions.

CT Secure Cloud Backup for Office 365	Microsoft Office 365
<b>Inbox/folder data</b> - unlimited	<b>Inbox/folder data</b> - limited to 2 years
<b>Deleted items</b> - unlimited	<b>Deleted items</b> - limited to 1 month
<b>Auto-archived data</b> - unlimited	<b>Auto-archived data</b> - limited to 1 month
<b>Junk emails</b> - unlimited	<b>Junk emails</b> - limited to 2 weeks
<b>Employee leaves</b> - unlimited	<b>Employee leaves</b> - limited to 1 month

Don't wait for a data loss event to occur. Get in touch to safeguard your valuable information.

T | 03334 123 456

E | [info@ct.uk](mailto:info@ct.uk)

[ct.uk](https://ct.uk)

