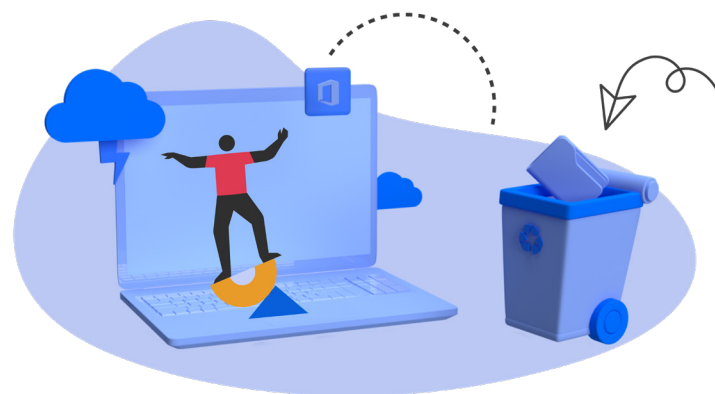




CT Secure Cloud Backup for Microsoft 365



CT Secure Cloud Backup for Microsoft 365 is a fully managed service that gives you comprehensive backup and replication for your Microsoft Office 365 suite. This includes unlimited storage and limitless retention policy for Exchange Online, SharePoint Online, Teams and OneDrive for Business. You can gain complete peace of mind that your data is totally protected.



Unlimited storage or data

All data included in per user billing model, including Exchange Online, SharePoint, OneDrive & Teams.



Priced per user

Simplified billing model, allowing addition users to be added throughout contract duration. No upfront costs, no setup fees, no bandwidth fees, no storage fees.



Immutability & dual location storage

We ensure data security by storing it in two locations, with one copy being immutable. Immutability prevents data deletion or modification.



Fully managed service

We provide the licensing, storage and support as one fully managed service.



Inclusive 24/7 support

All our remote backup customers have access to our UK 24x7 support desk so you can be confident you can get to your data when you need it most.



Tailored retention of data

Tailored retention periods to suit your compliance needs, from 1yr to unlimited retention, we design the service around your needs

We protect your Microsoft 365 data in the following scenarios...

Accidental Deletion

If you delete a user, whether you meant to or not, that deletion is replicated across the network, along with the deletion of their personal SharePoint site and their OneDrive data. Daily automatic backups of the O365 data protects you and your organisation against accidental deletion.

Retention Policy Gaps and Confusion

Microsoft 365 has limited backup and retention policies that can only fend off situational data loss and is not intended to be an all-encompassing backup solution. With our tailored retention you can rest assured that even if a user's account gets deactivated/deleted that can bring the data back.

Internal Security Threats

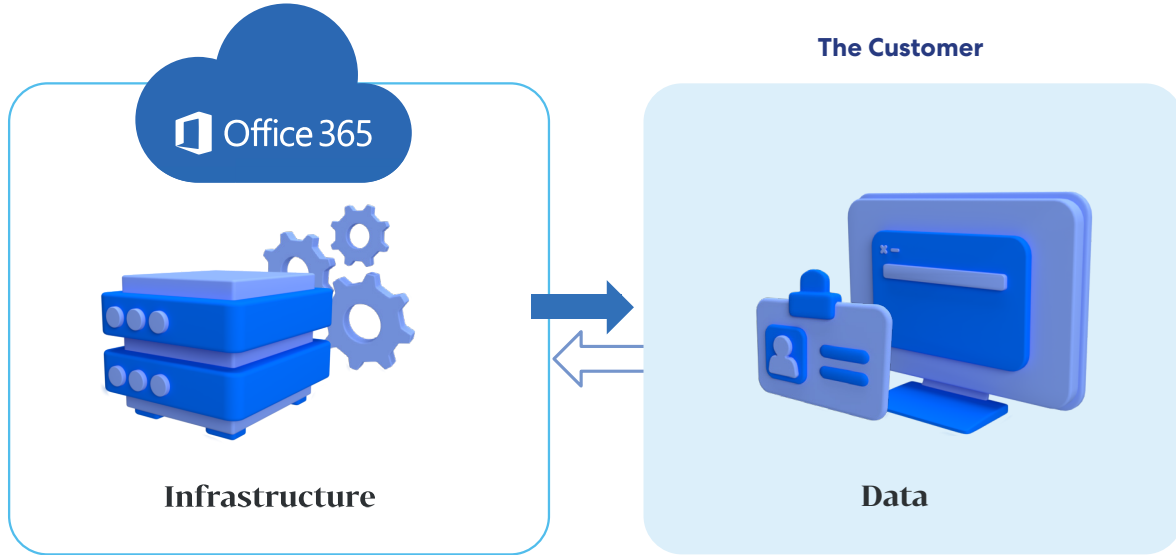
The idea of a security threat brings to mind hackers and viruses. However, businesses experience threats from the inside, and they are happening more often than you think. Alleviate the risk of data being deleted or corrupted with insider protection.

External Security Threats

Malware and viruses have done serious damage to organizations across the globe. Not only is company reputation at risk, but the privacy and security of internal and customer data as well. Protect your email data from external security threats with our fully managed service.

With Microsoft 365, it's your data

Microsoft Office 365 enables your organisation to work anywhere, anytime, without the need to host your own email infrastructure. It also provides a great way to minimise your onpremises footprint and free up IT resources. Even though Microsoft hosts the infrastructure, this doesn't replace your responsibility to maintain a backup of your Office 365 data.



What is Shared Responsibility for Microsoft 365?


Shared Responsibility is the shared ownership of accessing your data in the cloud by you and each cloud vendor. Microsoft 365 state that you have ownership of your data and identities, with the responsibility to ensure their security. This includes safeguarding your on-premises resources and the specific cloud components you manage, which may vary depending on the service type.

Regardless of the type of deployment, the following responsibilities are always retained by you:

- Data
- Endpoints
- Account
- Access management

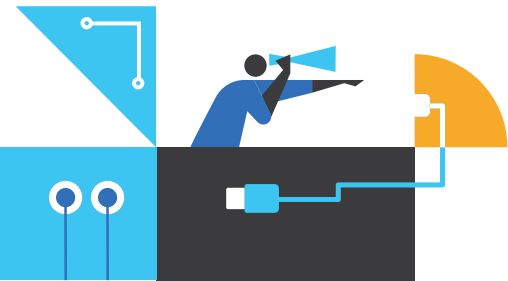
As shown in the table to the right, Microsoft carry some share of responsibility for it's share of cloud services however, CT can help you safeguard your most critical data.

Some of Microsoft's built-in features like versioning, litigation hold and recycle bins can retrieve deleted data. But these features have significant limitations for a comprehensive backup solution.



Responsibility		SaaS	PaaS	IaaS	On-prem
Responsibility always retained by the customer	Information and data	Customer	Customer	Customer	Customer
	Devices (Mobile and PCs)	Customer	Customer	Customer	Customer
	Accounts and identities	Customer	Customer	Customer	Customer
Responsibility varies by type	Identity and directory infrastructure	Shared	Shared	Customer	Customer
	Applications	Shared	Shared	Customer	Customer
	Network controls	Shared	Shared	Customer	Customer
Responsibility transfers to cloud provider	Operating system	Microsoft	Microsoft	Customer	Customer
	Physical hosts	Microsoft	Microsoft	Microsoft	Customer
	Physical network	Microsoft	Microsoft	Microsoft	Customer
	Physical datacentre	Microsoft	Microsoft	Microsoft	Customer

■ Microsoft
 ■ Customer
 ■ Shared

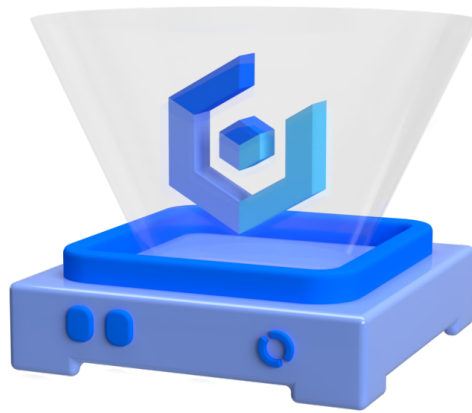


True ransomware protection

We use Cloudian Object storage to provide a totally secure platform for your data. Veeam version 7's immutability feature marks a second copy of your backup data as immutable throughout the retention period. This crucial safeguard creates an air-gapped barrier, protecting your Microsoft 365 data from potential security threats.

Our S3 compatible platform has object lock functionality which gives our clients full ransomware protection.

Object Lock (also known as WORM, which stands for "write once, read many") ensures that data, once written, cannot be changed, or deleted until a specified time has passed. Because the data cannot be modified, it, therefore, cannot be encrypted, thus rendering the malware ineffective. No one, not even those with admin rights, can change the data, thus also protecting it from employees with malicious intent.



Interested in our award winning Cloud services?

Speak to a member of the cloud team today.

T | 03334 123 456

E | info@ct.uk

[ct.uk](https://www.ct.uk)

