

## Power Platform Solution

Creating a custom application used to be a daunting task for organisations. It usually meant significant investment into a team of developers, weeks (or months) of development and expensive support contracts once the solution is deployed to the organisation. However, by using the Power Platform, Microsoft has changed the way custom applications are developed and deployed within organisations.

Included within most Microsoft 365 subscriptions are three applications that form the “Power Platform”.

1. Power Apps is a low code development platform for creating custom applications for laptops, tablets and mobile phones.
2. Power Automate is a workflow tool that will allow you to create automatic processes such as reminders or updates based on events.
3. Power BI is a powerful reporting and dashboarding tool that can be used to provide custom reports on your data.

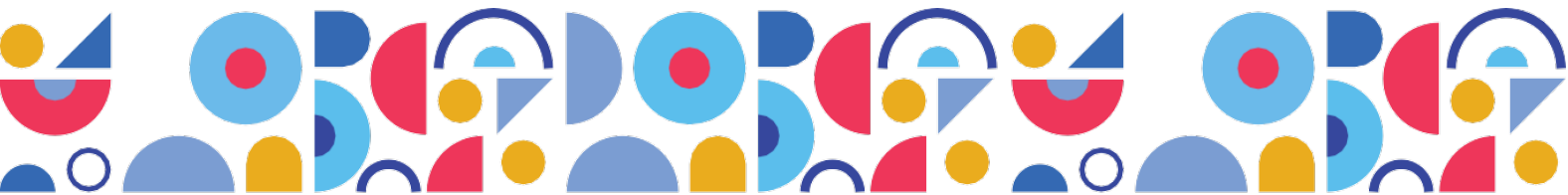
The use of Power Platform ensures the longevity of the solution as Microsoft are continually investing in cloud technologies. Microsoft publishes, and regularly updates, product roadmaps so that when new features are made available, organisations are able to determine if they would provide benefits to their applications. Continuous product improvement by Microsoft means that organisations can also continually improve their own custom applications to take advantage of the latest technology.

Whilst these tools are geared towards “Power Users” we also appreciate that not all organisations have the necessary skills initially to create business grade solutions that can address the specific needs of organisation.

Our Power Platform Solution approach allows us to acquire a deep understanding of the business requirements and the processes that support the solution. Breaking the project up into multiple phases, Analysis & Design, Build & Test and User Testing & Go-Live, allows organisations to confirm costs for the full solution without committing to a large expenditure upfront.

### Analysis & Design

- Review current solution or process, identify areas for improvement and new requirements for the solution.
- Understand the required security model for the new solution.
- Understand the processes that are involved in the solution.
- Determine any reporting requirements.
- Design screen mock-ups for the application interface.
- Document the solution design for the database, application, and the associated workflows.



- Finalise wireframe screen designs.
- Creation of a test script that will allow the project stakeholders to test all aspects of the solution.
- Confirm cost and timescales associated with completing the agreed solution.

### **Build & Test**

- Create & configure the data storage platform. This could be Microsoft Dataverse or another preferred location.
- Creation of application screens and associated workflow functionality that supports the solution.
- Design of identified reports and dashboards as identified design and analysis phase.
- Secure functionality in line with security requirements
- Testing of all functionalities within the application.
- Regular review meetings with the project team to demonstrate functionality.

### **User Testing & Go-Live**

- Run a training session to understand the use of the app and associated workflows.
- Introduce the approach to testing via the test scripts written during the analysis & design phase.
- Provide Microsoft Teams drop-in sessions to facilitate testing of the solution.
- Remediation of any solution bugs.
- Support drawdown time (to be used within 3 months of Go-Live)
- Technical handover to IT Support function

## **How We Can Help**

Our consultants have a wide range of experience designing and building Power Platform solutions. During that time, they've developed the fundamental technical & non-technical skills required for any Power Platform project.

