



Maximising Microsoft 365 for Hospices

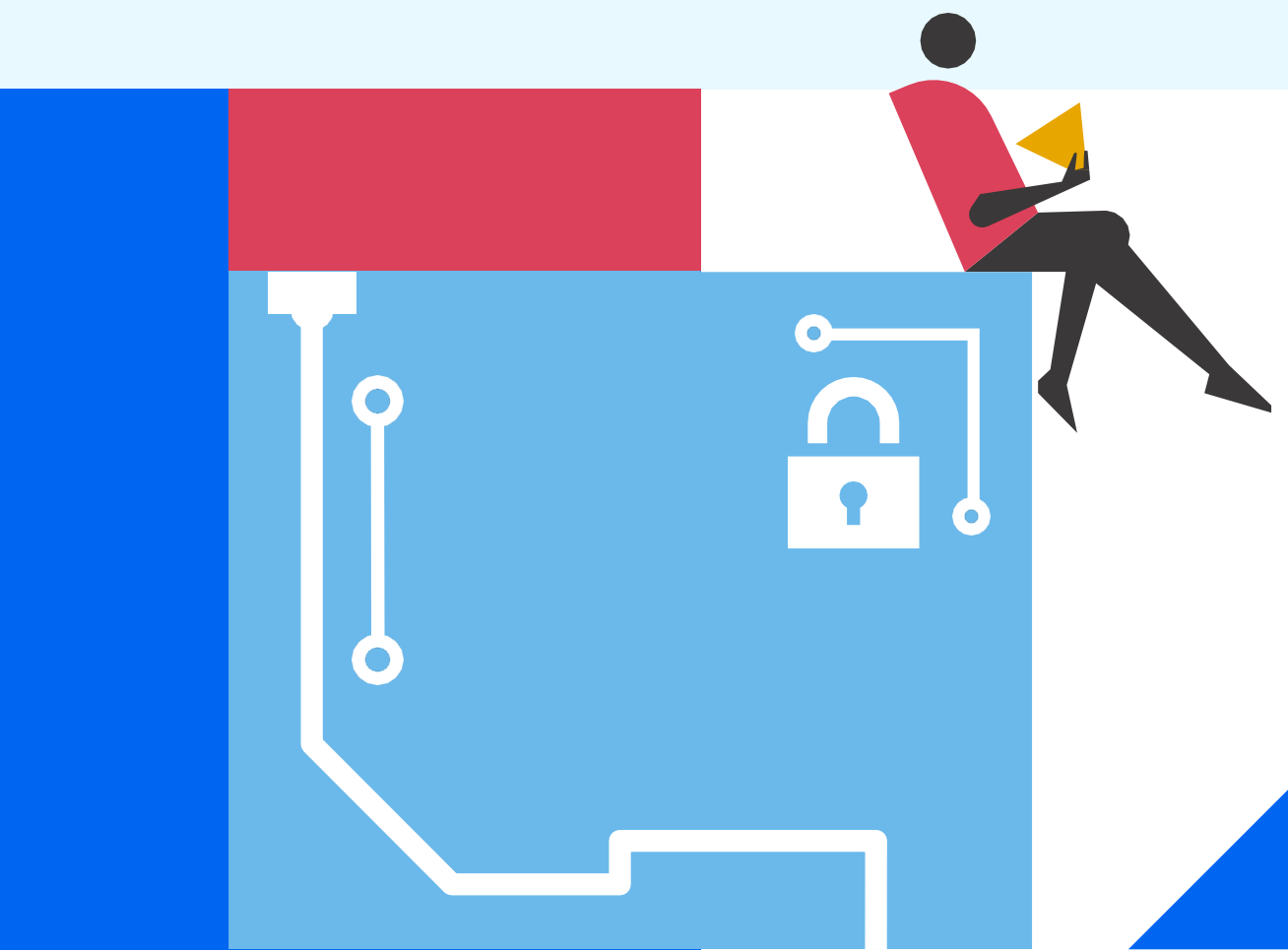
Episode 1: Applications to enhance hospice care



Mike Owen,
Modern Workplace Director
yoko:10



Gavin Turnbull,
Managed Services Consultant
Central Technology





Central Technology – IT services for businesses across the UK

- Founded in 2002, with over 20 years' experience in IT Managed Services
- Working with over 30 hospices, charities and healthcare organisations since 2019
- Supporting organisations across the UK from our Head Office in Derbyshire, with additional branches in Leicester and Dorset
- Strategic, partnership approach to IT



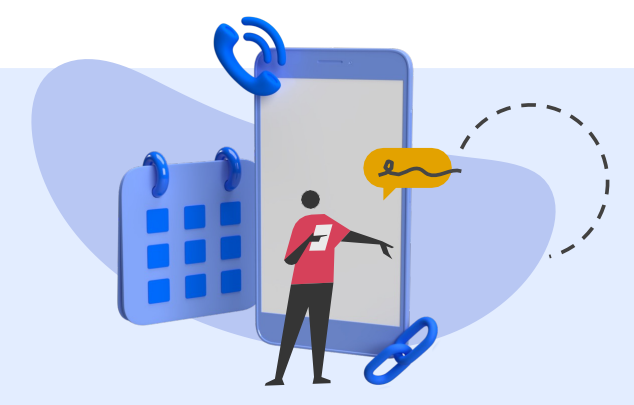
IT Support



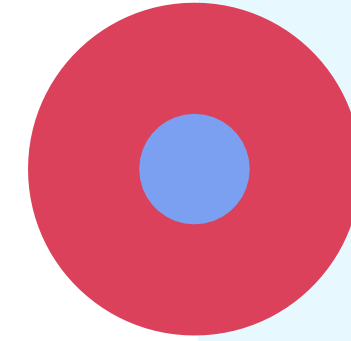
Cyber Security



Cloud Solutions



Communications



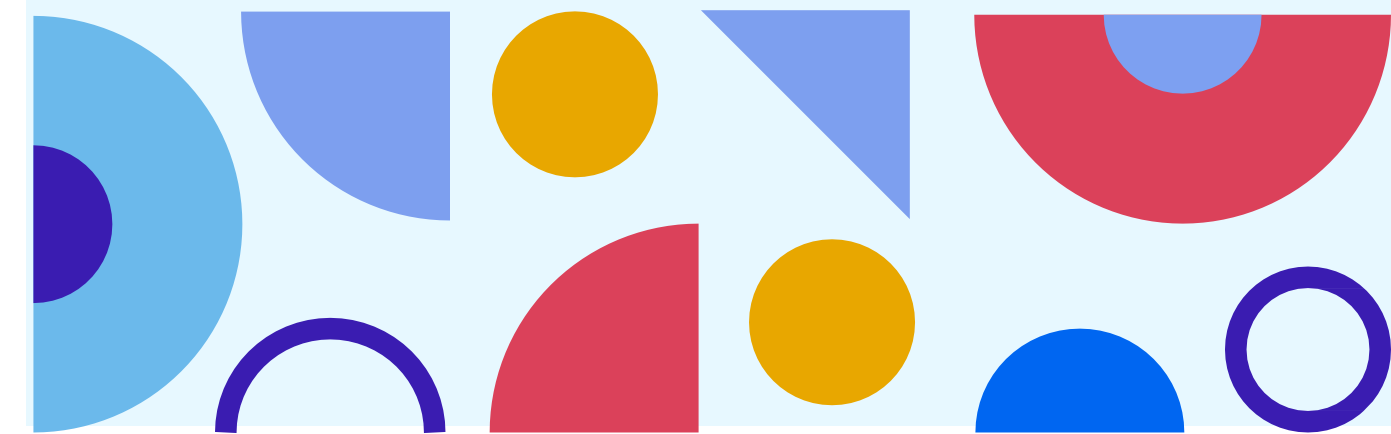
Agenda

Introduction to Microsoft 365 for Hospices

License comparison between E3 and Small Business Premium

Using Microsoft Teams for Collaboration

Live Q&A



Introduction to Microsoft 365 for Hospices



Microsoft 365 Overview



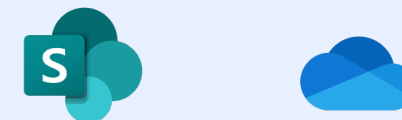
Microsoft Office

(Online/Installable Apps)



Exchange Online

(Email)



SharePoint & OneDrive

(Web Sites & File Storage)



Microsoft Teams

(Collaboration)



Power Platform Suite

(Custom workflows & Apps)



Microsoft Intune

(Device & Application Protection)



Microsoft Purview

(Data Security & Compliance)



Viva Suite

(Employee Engagement)



Bookings

(Client bookings app)



Microsoft Stream

(Video Presentation/playback)



Microsoft Forms

(Electronic Forms for Data Capture)



+ Others!

(Project, Planner, Clipchamp, Sway, ..)



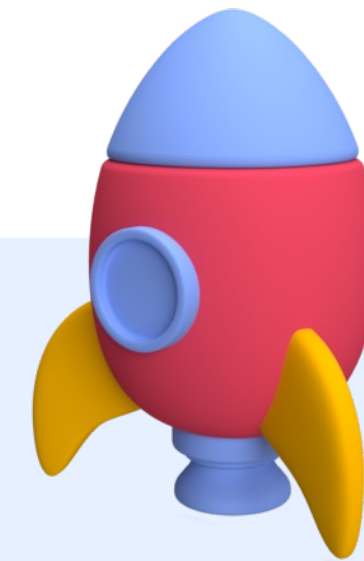
Managing Microsoft 365 is Challenging!



**Unmanaged
Sprawl**



**Secure & Safe
Collaboration**

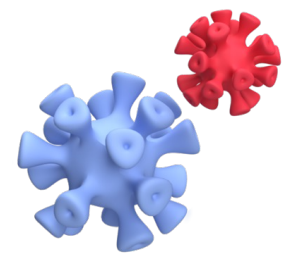


User Adoption

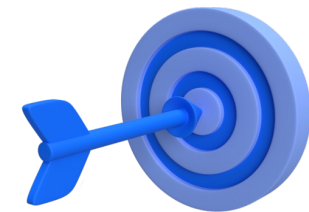


The Importance of Governance

Microsoft 365 governance is a set of clear rules and guidelines for how people should use Microsoft 365.



Reduces risks



Enhances productivity



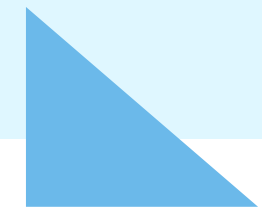
Improves security



Improves content & data management



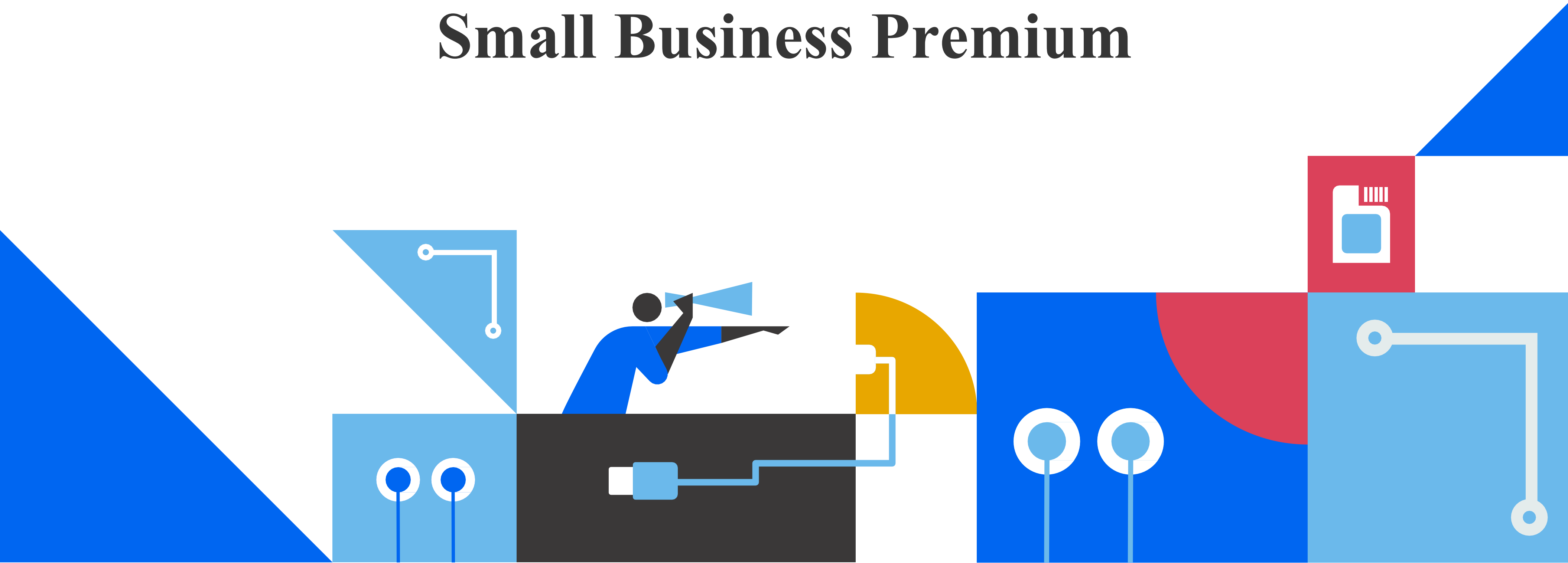
Policies & processes for governing Microsoft 365



- 01 What tools to use, when?
- 02 Roles & responsibilities
- 03 Naming & tagging conventions

- 04 Data Lifecycle – Files & Sites/Teams
- 05 Application policies
- 06 Compliance & Security policies

License comparison between E3 and Small Business Premium



The Main Differences



Feature	Office 365 E3	MS365 Business Premium
User capacity	Unlimited Users	Up to 300 users
Email & storage	100GB mailbox, 5TB OneDrive	50GB mailbox, 1TB OneDrive
Data loss prevention (DLP)	Advanced DLP with granular controls	Basic DLP with limited customisation
Compliance	Advanced eDiscovery tools for regulatory needs	Baselines compliance features for SMBs
Microsoft Teams	Not included/Add-on required	Included
Microsoft Intune	Not included/Add-on required	Included

Data Security & Compliance Demo



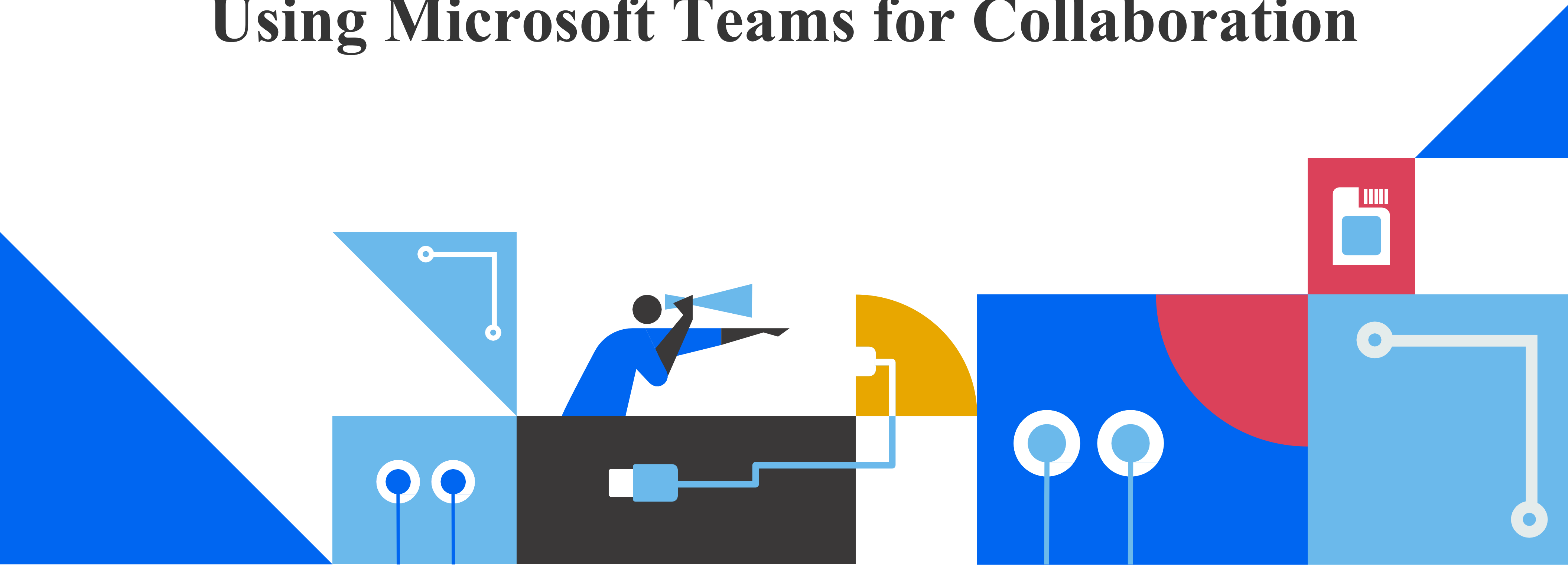
01 Sensitivity labels to protect individual files

02 Prevent unintentional data loss

03 Data compliance with retention labels



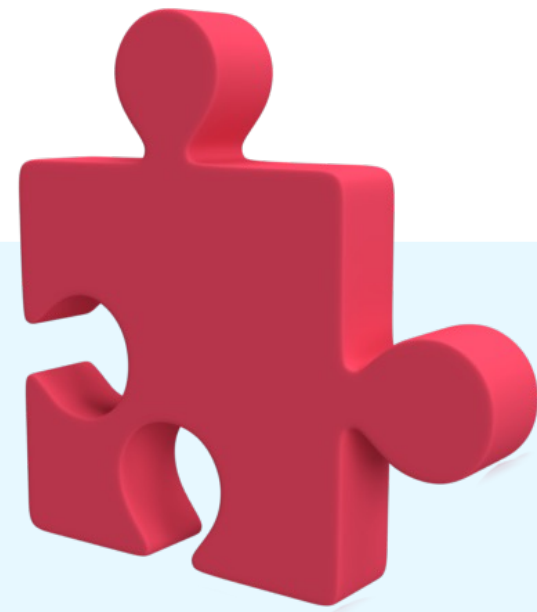
Using Microsoft Teams for Collaboration



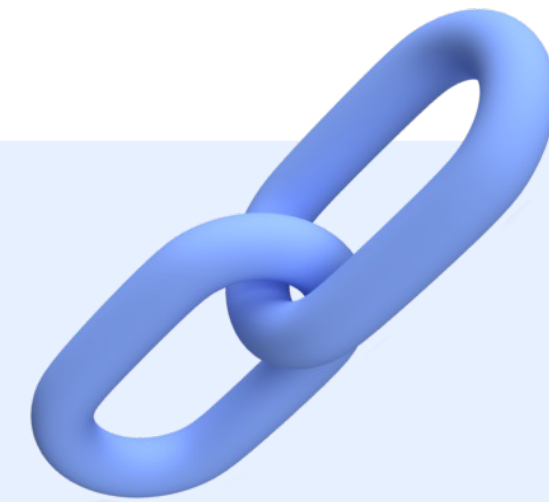
Microsoft Teams



Meetings & messaging



Collaboration



Connected apps & experiences

Teams Collaboration Demo



01

Sharing information and files

02

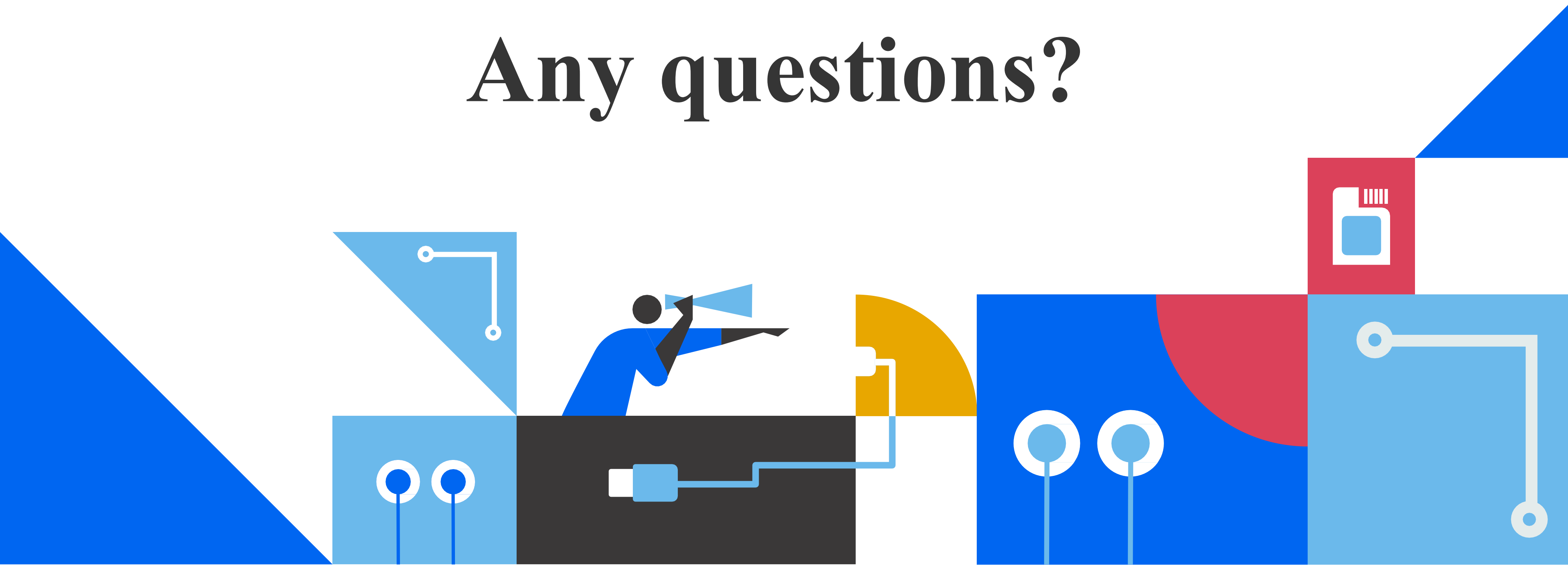
Collaborating on a policy

03

Shifts app



Any questions?





Thank you for attending!

Webinar recording will be sent out to everyone, including those who missed it!

Any feedback is welcome! Please contact gavin.turnbull@ct.uk with any additional questions you might have.

Next week...

Episode 2: Modern data compliance for hospices

A deep dive into the security of Microsoft applications and what policies you need to implement to meet compliance and data governance requirements.

