

Cyber Security Package: **Elite**

Elite is designed for businesses where security is business-critical. It delivers our highest level of managed protection, combining 24/7 monitoring, advanced threat prevention, and full incident response - led by dedicated experts.

With AI-powered scanning, dark web monitoring, and premium email and endpoint security, Elite gives you confidence that threats will be contained quickly and professionally, no matter how advanced.

What this means for your business

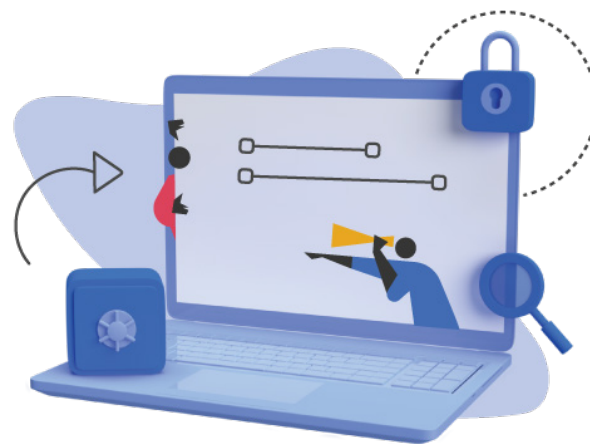
Elite goes beyond prevention - it gives you full control and support through every stage of a potential incident. From early detection to expert-led response and root cause analysis, you're covered. This reduces the risk of serious breaches, keeps your systems online, and protects your reputation.

Premium email filtering extends security across Microsoft Teams, OneDrive, and SharePoint, while round-the-clock dark web monitoring flags compromised credentials before they become liabilities.

Is Elite the right fit for you?

If your business has strict regulatory obligations, handles sensitive data, or can't afford downtime, Elite is built for you. It's ideal when you need guaranteed incident response without expanding your internal IT team.

Whether you're in finance, legal, healthcare, or any sector where resilience is key, this package gives you high-assurance protection that scales with your risk.



Highest Level of Managed Cyber Defence



Endpoint protection

Reduces threat exposure and blocks ransomware using AI-powered defences.



Email Security

Protects email, Teams, SharePoint, and OneDrive with advanced scanning.



Web Filtering

Enforces browsing rules and blocks harmful websites for all users.



Threat Intelligence

24/7 monitoring for leaked credentials and dark web exposure alerts.



Managed Detection & Response

24/7 expert threat hunting, full response, root cause analysis, and breach warranty.

Elite is built to take the pressure off your internal teams while keeping your business secure, compliant, & operational, even during a crisis.

With the most advanced tools & our experts behind you, you're protected against the worst-case scenario & ready to bounce back fast if it ever happens.

