

Cyber Security Package: Enhanced

Enhanced is designed for businesses that need more than basic protection. With advanced endpoint security, proactive email filtering, and 24/7 managed threat detection, it delivers greater visibility and a faster response to evolving threats.

This package is a strong fit for organisations in regulated sectors or those handling sensitive data, where rapid containment and clear reporting are critical.

What this means for your business

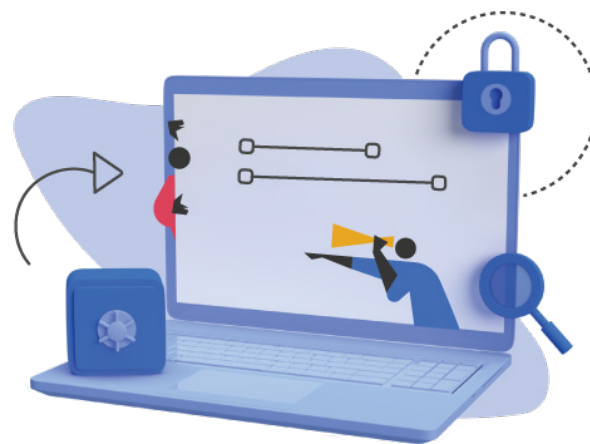
The Enhanced package delivers a strong layer of managed security designed to prevent ransomware, malware, and exploits before they impact your systems. With 24/7 monitoring and expert-led threat response, your business benefits from around-the-clock protection - without the need for in-house incident responders.

Built-in web filtering helps enforce safe browsing policies and reduce user risk, no matter where your team is working. This proactive approach not only improves security but also minimises downtime and supports regulatory compliance with less internal overhead.

Is Enhanced the right fit for you?

Enhanced is perfect for organisations looking to strengthen their cybersecurity with expert support and faster threat response - without increasing internal complexity. It suits businesses that handle sensitive data, face growing cyber risks, or operate in environments requiring stronger security and compliance.

This package scales with your needs, providing comprehensive protection and peace of mind as your risks evolve.



Greater Visibility, Stronger Protection, Expert Monitoring



Endpoint protection

AI-driven ransomware and malware blocking with adaptive, real-time device defense.



Email Security

Phishing filters, attachment sandboxing, and dynamic warning banners for safety.



Web Filtering

Category-based website blocking and policy enforcement wherever your team works.



Threat Intelligence

Continuous dark web monitoring to alert on exposed company credentials.



Managed Detection and Response

24/7 expert threat monitoring, hunting, and rapid incident response.

With these services, you get complete, expert-managed protection against cyber threats.

